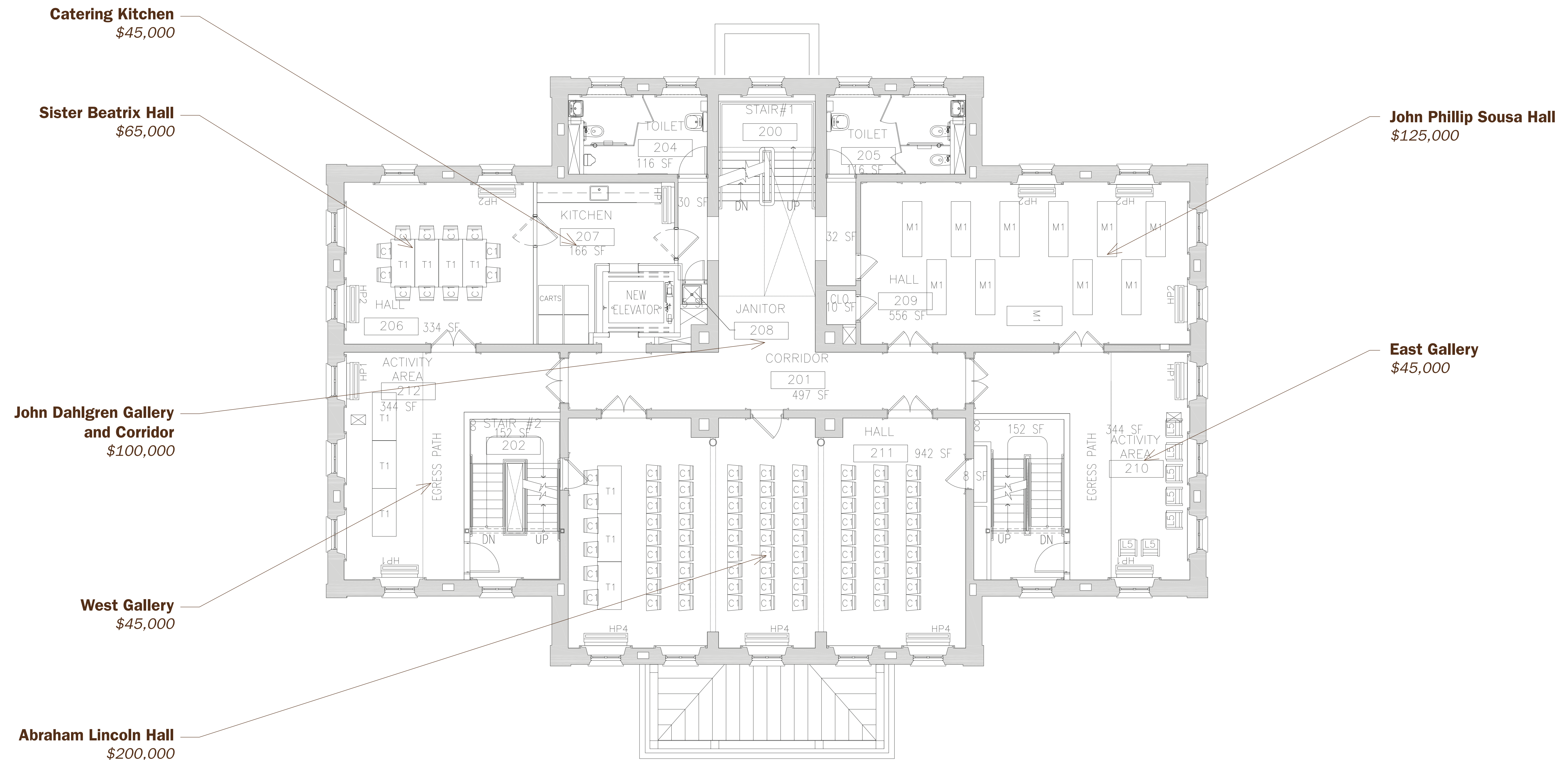


THE INTERIOR

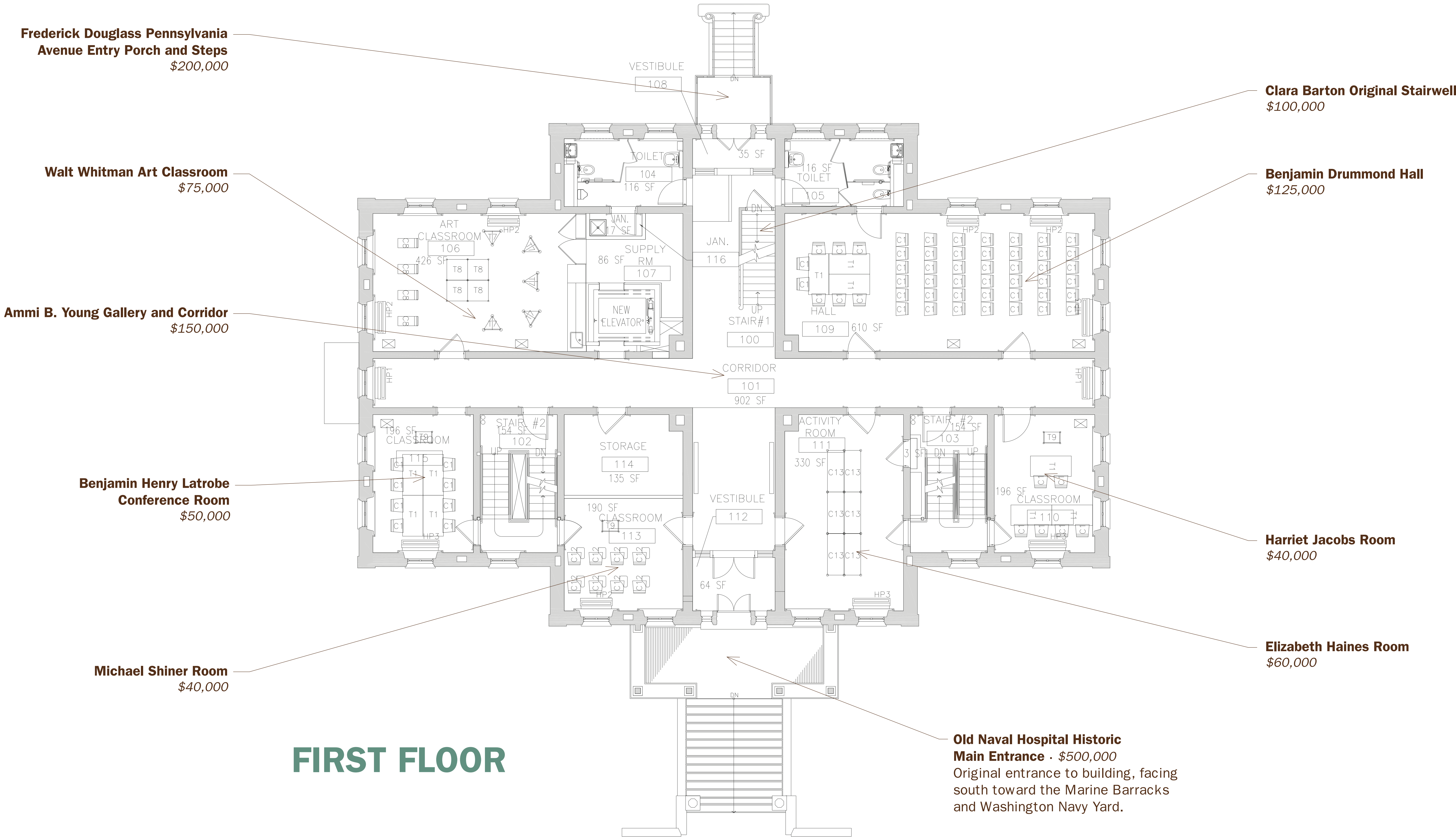
Underwriting Opportunities



SECOND FLOOR

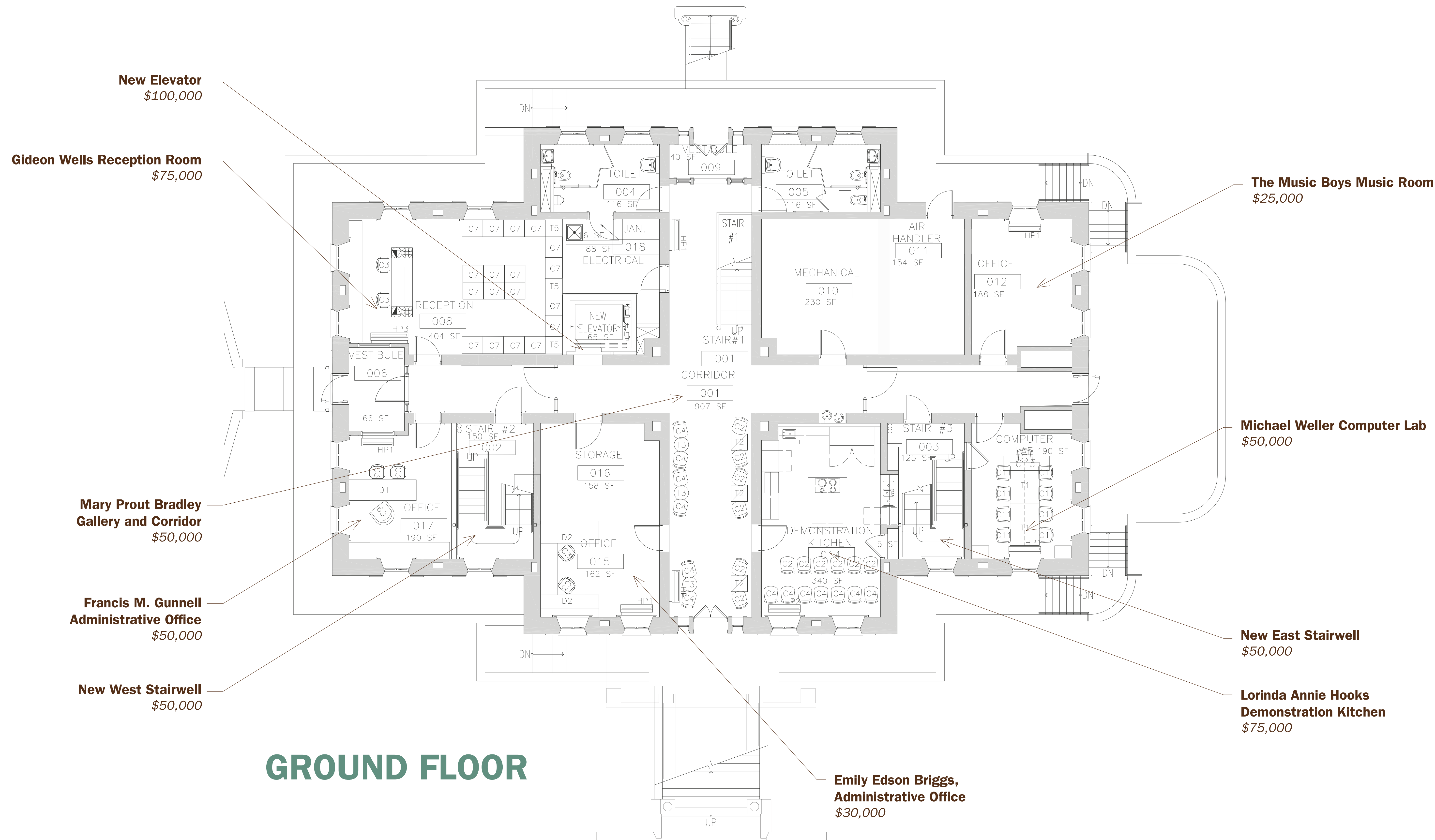
THE INTERIOR

Underwriting Opportunities



THE INTERIOR

Underwriting Opportunities



THE GROUNDS

Underwriting Opportunities

9th Street Entry Gate · \$10,000

Accessible pedestrian entrance to Hill Center grounds.

Cafe Garden · \$20,000

The Cafe Garden is a community gathering space. A tree canopy of dappled shade, plantings and surrounding lawn invite visitors to linger and enjoy the terrace.

Carriage House Entry Gate · \$10,000

Main pedestrian entry to Carriage House eatery.

Carriage House Roof · \$75,000

New copper pyramid hip roof with built-in gutters and repainted lower shed roofs.

West Entry Garden · \$50,000

As the main entry to the renovated Old Naval Hospital, these gardens are a main focus of the project. Shrubs and perennials offer three seasons of blooms to welcome visitors.

Rain Garden · \$125,000

The Rain Garden is both a beautiful planting design and a work horse in the landscape. By filtering rain water and reducing storm water runoff, this garden helps reduce stress on the city storm sewer system.

Wisteria Garden · \$20,000

The Wisteria Garden creates a new arbor to give a home to the original wisteria vines, providing a link to the site's past for visitors who choose to sit for a moment under the flowering canopy.

Carriage House Garden · \$45,000

The main pedestrian entrances from 9th Street SE are framed by large sweeps of shrubs and perennials. The Carriage House Garden is an important element of welcoming visitors to the Hill Center grounds.

Seamen's Flag · \$25,000

Hill Center honors its proud naval tradition with the renovation of the existing flag pole and concrete terrace. This area allows the community to maintain an important link with the history of the Naval Hospital.

Pennsylvania Avenue Entry Garden · \$30,000

The Pennsylvania Avenue porch & steps are surrounded by beds of shrubs and perennials. This area provides a beautiful face for Hill Center.

Historic Wrought Iron Gazebo · \$50,000

The renovated gazebo, originally constructed to cover a well, nestles into a planting of shrubs and perennials. A prominent historic feature of the newly designed landscape.

Legacy Trees · \$10,000 *each*

As Hill Center plans for the future, the Legacy Trees will provide shade and character to the site for many years to come.

Commons · \$75,000

The Commons offers a large space for outdoor events. An elegant area of lawn and historic trees, it is grounded by the surrounding flowering shrubs and beds of groundcover.

Reading Garden · \$45,000

More than just a public landscape, Hill Center offers quiet space for reflection. The Reading Garden is just such a space, with a backdrop of evergreen and flowering shrubs and an overarching canopy of large historic trees.

Legacy Tree

Legacy Trees

